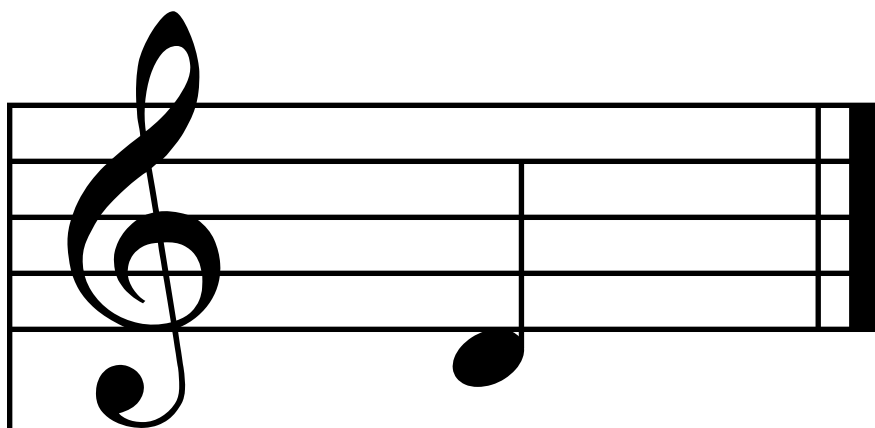
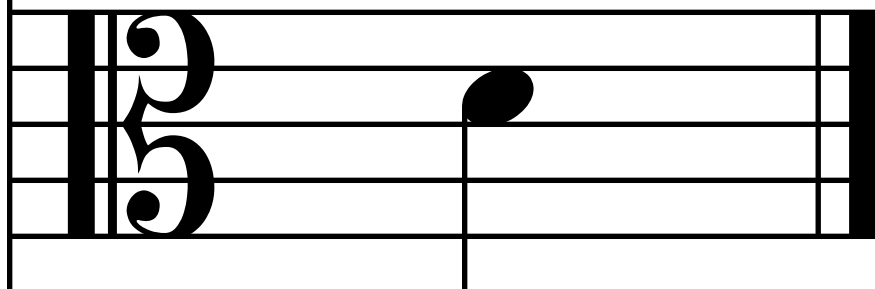


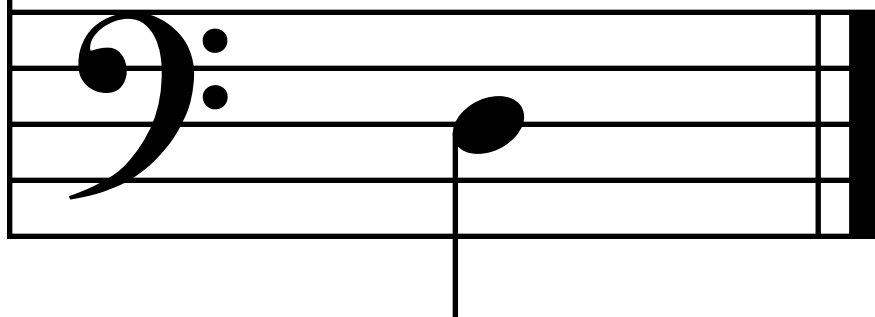
Violin



Viola



Cello  
Bass



Violin

A musical score for three instruments: Violin, Viola, and Cello/Bass. The score is written on three staves, each with a single note. The Violin staff uses a treble clef and has a note on the second line. The Viola staff uses an alto clef and has a note on the second line. The Cello/Bass staff uses a bass clef and has a note on the second line. The notes are all quarter notes. The staves are connected by a brace on the left and a bar line on the right.

Viola

Cello  
Bass

Violin

A musical score for three instruments: Violin, Viola, and Cello/Bass. The score is written on three staves, each with a five-line staff. The Violin staff uses a treble clef and has a single quarter note on the second line. The Viola staff uses an alto clef and has a single quarter note on the second line. The Cello/Bass staff uses a bass clef and has a single quarter note on the second line. The notes are all black dots with stems pointing downwards. The staves are enclosed in a large bracket on the left side.

Viola

Cello  
Bass

Violin

A musical score for three instruments: Violin, Viola, and Cello/Bass. The score is written on three staves, each with five lines. The Violin staff uses a treble clef and has a single quarter note on the second line. The Viola staff uses an alto clef and has a single quarter note on the second line. The Cello/Bass staff uses a bass clef and has a single quarter note on the second line. The notes are all black dots with vertical stems. The staves are enclosed in a large, thick black bracket on the right side.

Viola

Cello  
Bass

Violin

A musical score for three instruments: Violin, Viola, and Cello/Bass. The score is written on three staves, each with a five-line staff. The Violin staff uses a treble clef and has a single quarter note on the second line. The Viola staff uses an alto clef and has a single quarter note on the second line. The Cello/Bass staff uses a bass clef and has a single quarter note on the second line. The notes are all black dots with stems, indicating a quarter note. The staves are connected by a large bracket on the left and a vertical bar line on the right.

Viola

Cello  
Bass

Violin

A musical score for three instruments: Violin, Viola, and Cello/Bass. The score is written on three staves, each with a five-line staff. The Violin staff uses a treble clef and has a single quarter note on the second line. The Viola staff uses an alto clef and has a single quarter note on the second line. The Cello/Bass staff uses a bass clef and has a single quarter note on the second line. The notes are all black and have stems pointing downwards. The staves are connected by a large bracket on the left and a vertical bar line on the right.

Viola

Cello  
Bass

Violin

A musical score for three instruments: Violin, Viola, and Cello/Bass. The score is written on three staves, each with five lines. The Violin staff uses a treble clef and has a single quarter note on the second line. The Viola staff uses an alto clef and has a single quarter note on the second line. The Cello/Bass staff uses a bass clef and has a single quarter note on the second line. The notes in all three staves are positioned at the same relative height on their respective staves, indicating they play the same pitch. The staves are enclosed in a large bracket on the left side.

Viola

Cello  
Bass

Violin

A musical score for three instruments: Violin, Viola, and Cello/Bass. The score is written on three staves, each with five lines. The Violin staff uses a treble clef and has a single quarter note on the second line. The Viola staff uses an alto clef and has a single quarter note on the second line. The Cello/Bass staff uses a bass clef and has a single quarter note on the second line. The notes are all black and have stems pointing upwards. The staves are enclosed in a large, black, stylized bracket on the left side.

Viola

Cello  
Bass



Violin

A musical score for three instruments: Violin, Viola, and Cello/Bass. The score is presented on three staves, each with a five-line staff. The Violin staff uses a treble clef and contains a single quarter note on the second line. The Viola staff uses an alto clef and contains a single quarter note on the second line. The Cello/Bass staff uses a bass clef and contains a single quarter note on the second line. The three staves are grouped together by a large bracket on the left side. The music is in a common time signature, indicated by a vertical line on the right side of the staves.

Viola

Cello  
Bass

Violin

A musical score for three instruments: Violin, Viola, and Cello/Bass. The score is written on three staves, each with five lines. The Violin staff uses a treble clef and contains a quarter note on the second line (D4) and a quarter note on the second space (E4). The Viola staff uses an alto clef and contains a quarter note on the second line (C3). The Cello/Bass staff uses a bass clef and contains a quarter note on the second space (G2). The staves are enclosed in a large bracket on the left and a vertical bar on the right.

Viola

Cello  
Bass

Violin

A musical score for three instruments: Violin, Viola, and Cello/Bass. The score is written on three staves, each with a single note. The Violin staff uses a treble clef and has a note on the second line. The Viola staff uses an alto clef and has a note on the second line. The Cello/Bass staff uses a bass clef and has a note on the second line. The notes are all quarter notes. The staves are connected by a brace on the left and a bar line on the right.

Viola

Cello  
Bass

Violin

A musical score for three instruments: Violin, Viola, and Cello/Bass. The score is written on three staves, each with five lines. The Violin staff uses a treble clef and contains a single quarter note on the second line. The Viola staff uses an alto clef and contains a single quarter note on the second line. The Cello/Bass staff uses a bass clef and contains a single quarter note on the second line. The three staves are grouped together by a large brace on the left side. The music is in a 2/4 time signature, indicated by the vertical bar lines.

Viola

Cello  
Bass