

# Fingerboard Geography for Viola

- First Position -

## Key of D Major



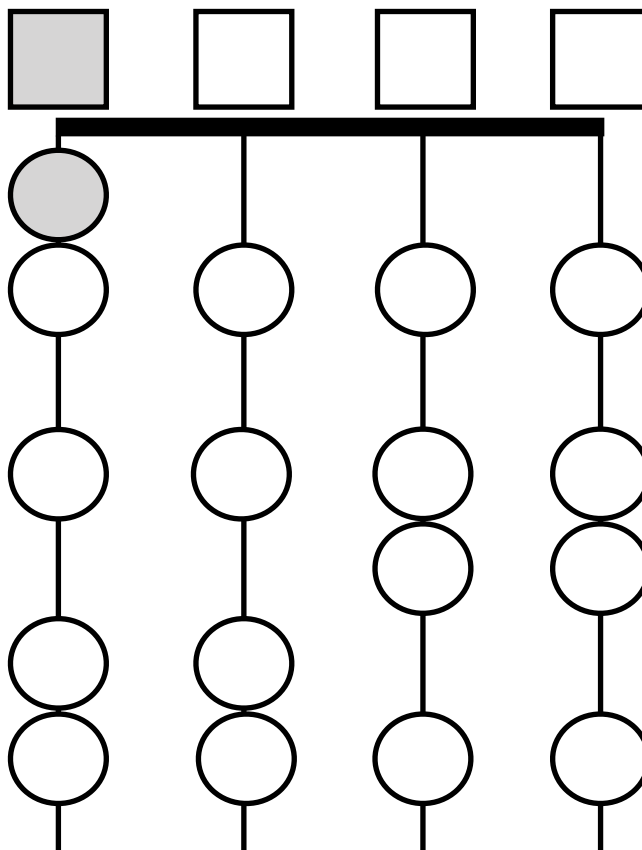
The key of D Major has 2 sharps: F# and C#. (Note: Open C-string is not allowed!)

Finger patterns used:

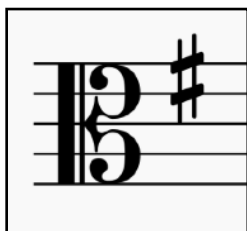
C string: \_\_\_\_\_ G string: \_\_\_\_\_

D string: \_\_\_\_\_ A string: \_\_\_\_\_

Finger patterns are 1-2, 2-3, 3-4, or open



## Key of G Major



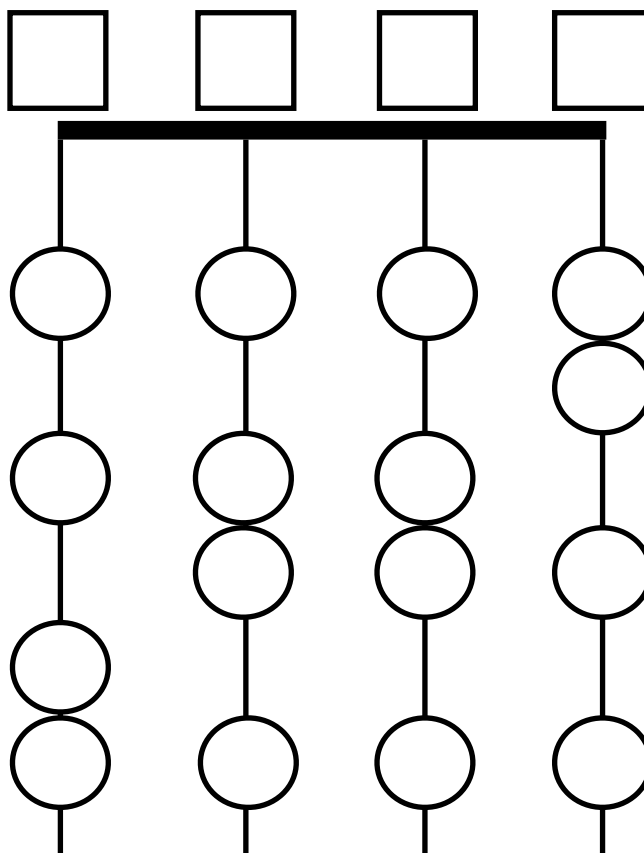
The key of G Major has 1 sharp: F#.

Finger patterns used:

C string: \_\_\_\_\_ G string: \_\_\_\_\_

D string: \_\_\_\_\_ A string: \_\_\_\_\_

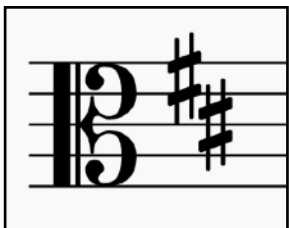
Finger patterns are 1-2, 2-3, 3-4, or open



# Fingerboard Geography for Viola

- First Position -

## Key of D Major



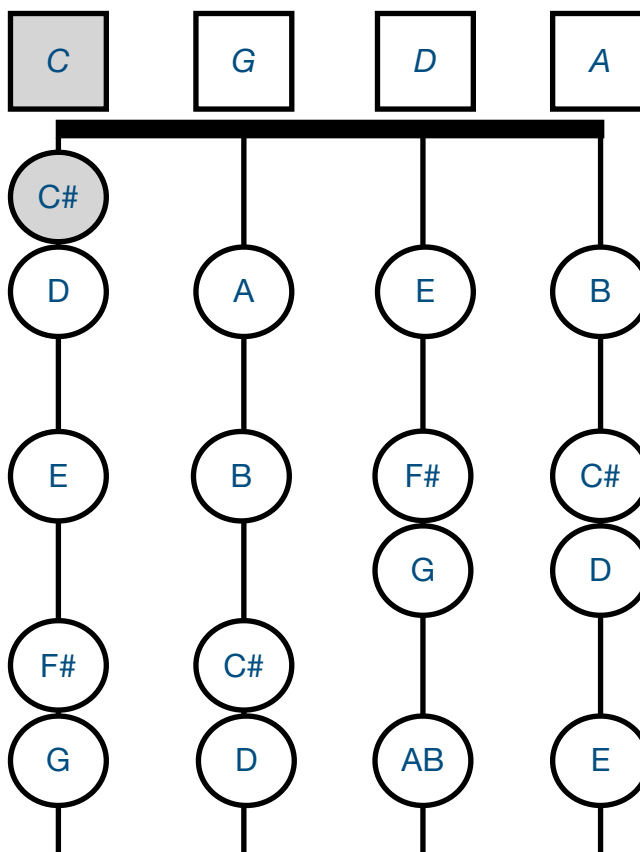
The key of D Major has 2 sharps: F# and C#. (Note: Open C-string is not allowed!)

Finger patterns used:

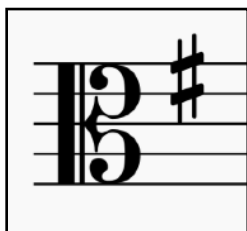
C string: \_\_\_\_\_ G string: \_\_\_\_\_

D string: \_\_\_\_\_ A string: \_\_\_\_\_

Finger patterns are 1-2, 2-3, 3-4, or open



## Key of G Major



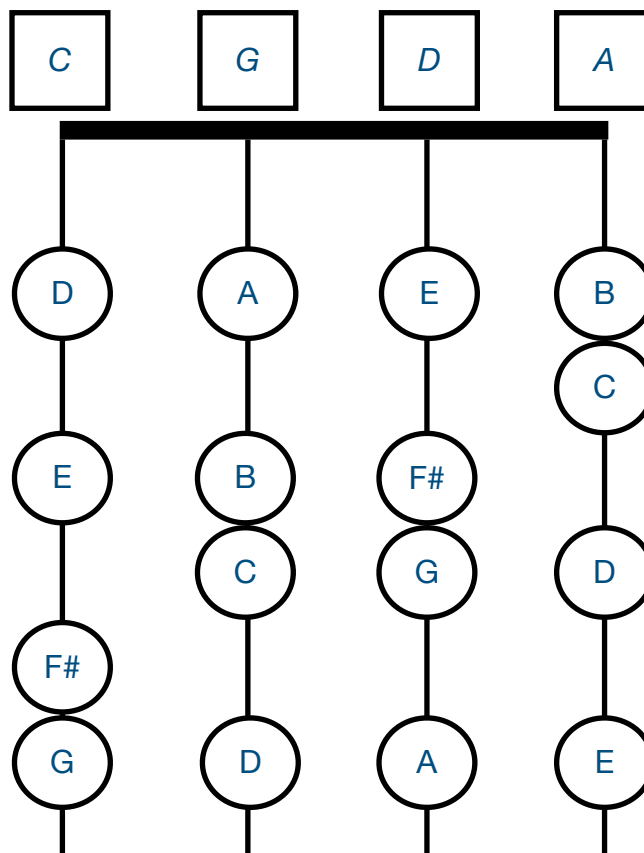
The key of G Major has 1 sharp: F#.

Finger patterns used:

C string: \_\_\_\_\_ G string: \_\_\_\_\_

D string: \_\_\_\_\_ A string: \_\_\_\_\_

Finger patterns are 1-2, 2-3, 3-4, or open



# Fingerboard Geography for Viola

- First Position -

## Key of C Major



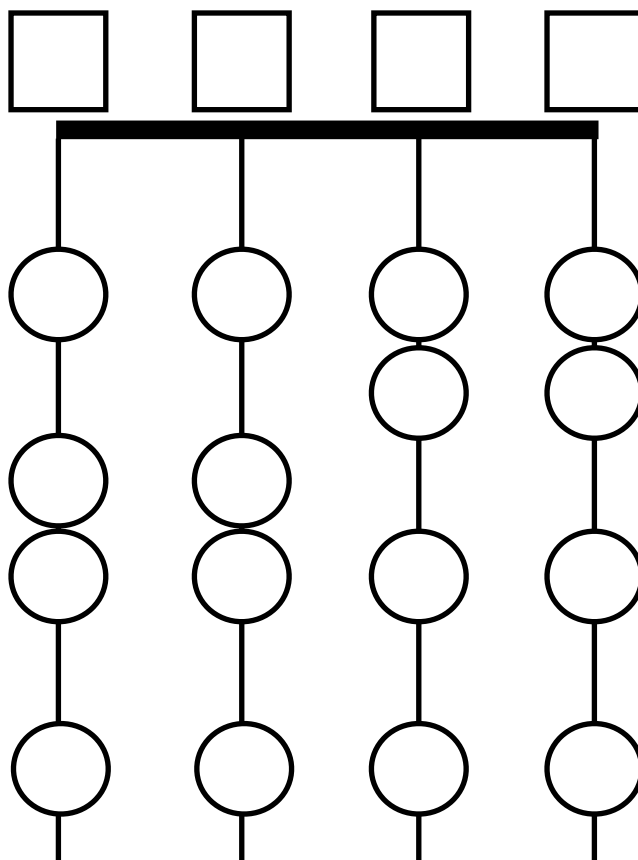
The key of C Major has no sharps or flats.

Finger patterns used:

C string: \_\_\_\_\_ G string: \_\_\_\_\_

D string: \_\_\_\_\_ A string: \_\_\_\_\_

Finger patterns are 1-2, 2-3, 3-4, or open



## Key of F Major

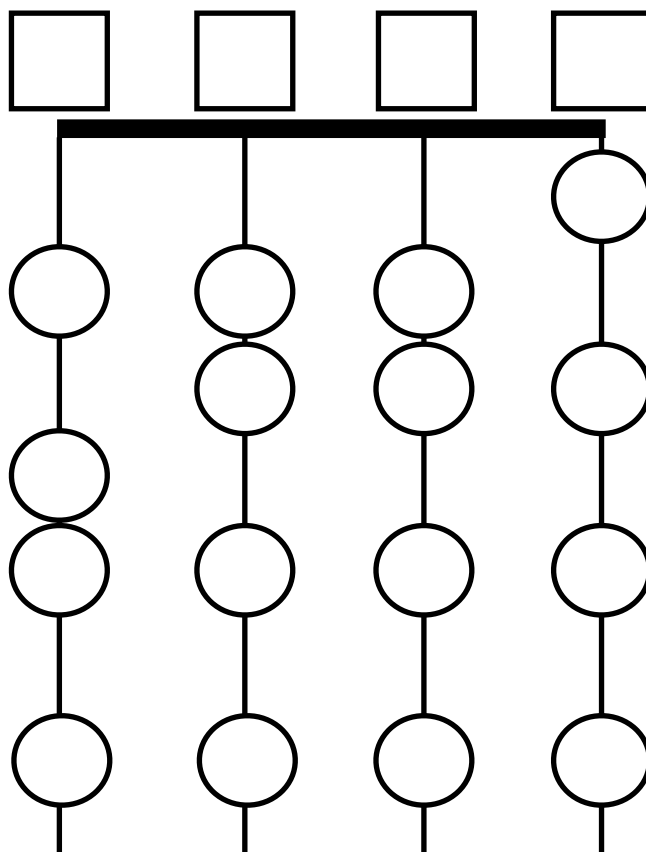
The key of F Major has 1 flat, B-flat.

Finger patterns used:

C string: \_\_\_\_\_ G string: \_\_\_\_\_

D string: \_\_\_\_\_ A string: \_\_\_\_\_

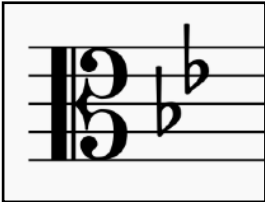
Finger patterns are 1-2, 2-3, 3-4, or open



# Fingerboard Geography for Viola

- First Position -

## Key of B-Flat Major



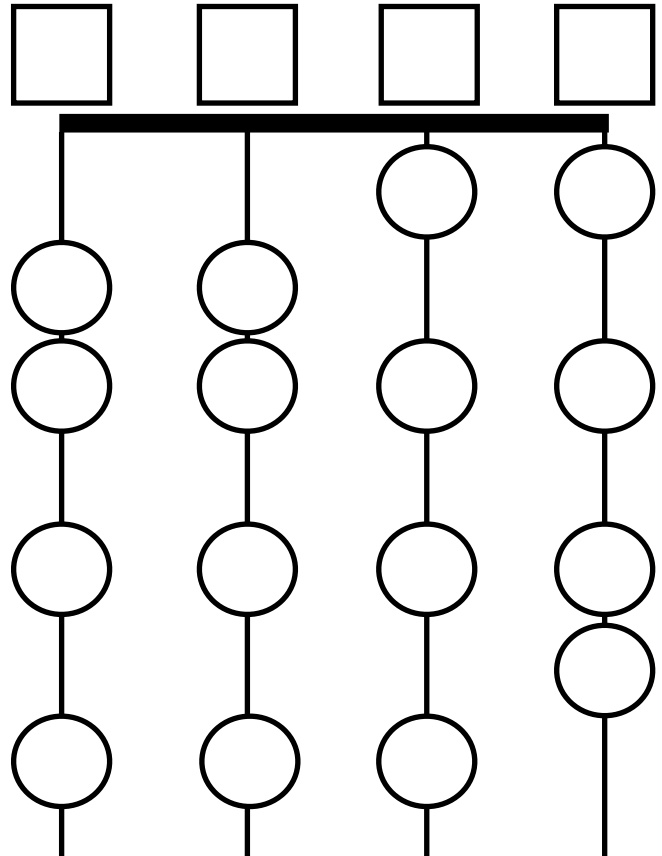
The key of B-flat Major has 2 flats: B-flat and E-flat.

Finger patterns used:

C string: \_\_\_\_\_ G string: \_\_\_\_\_

D string: \_\_\_\_\_ A string: \_\_\_\_\_

Finger patterns are 1-2, 2-3, 3-4, or open



## Key of A Major



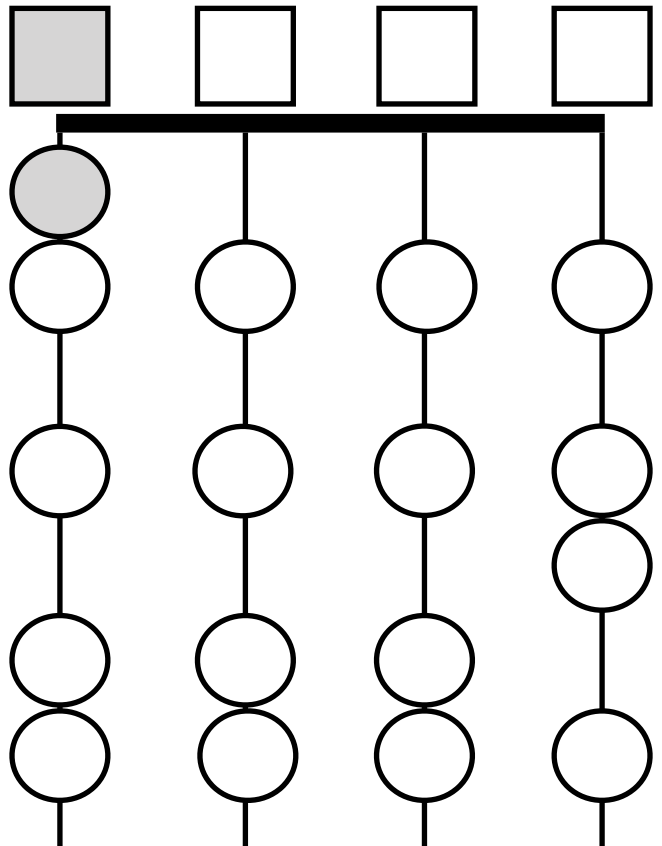
The key of A Major has 3 sharps: F#, C#, and G#. (*Note: Open C-string is not allowed!*)

Finger patterns used:

C string: \_\_\_\_\_ G string: \_\_\_\_\_

D string: \_\_\_\_\_ A string: \_\_\_\_\_

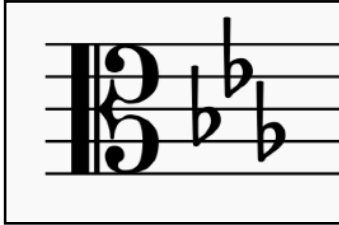
Finger patterns are 1-2, 2-3, 3-4, or open



# Fingerboard Geography for Viola

- First Position -

## Key of E-flat Major



The key of E-flat Major has 3 flats: B-flat, E-flat, and A-flat.  
(Note: Open A string is not allowed!)

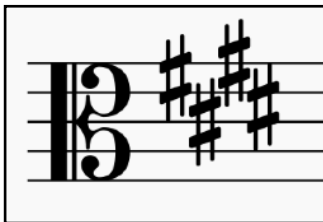
Finger patterns used:

C string: \_\_\_\_\_ G string: \_\_\_\_\_

D string: \_\_\_\_\_ A string: \_\_\_\_\_

Finger patterns are 1-2, 2-3, 3-4, or open

## Key of E Major



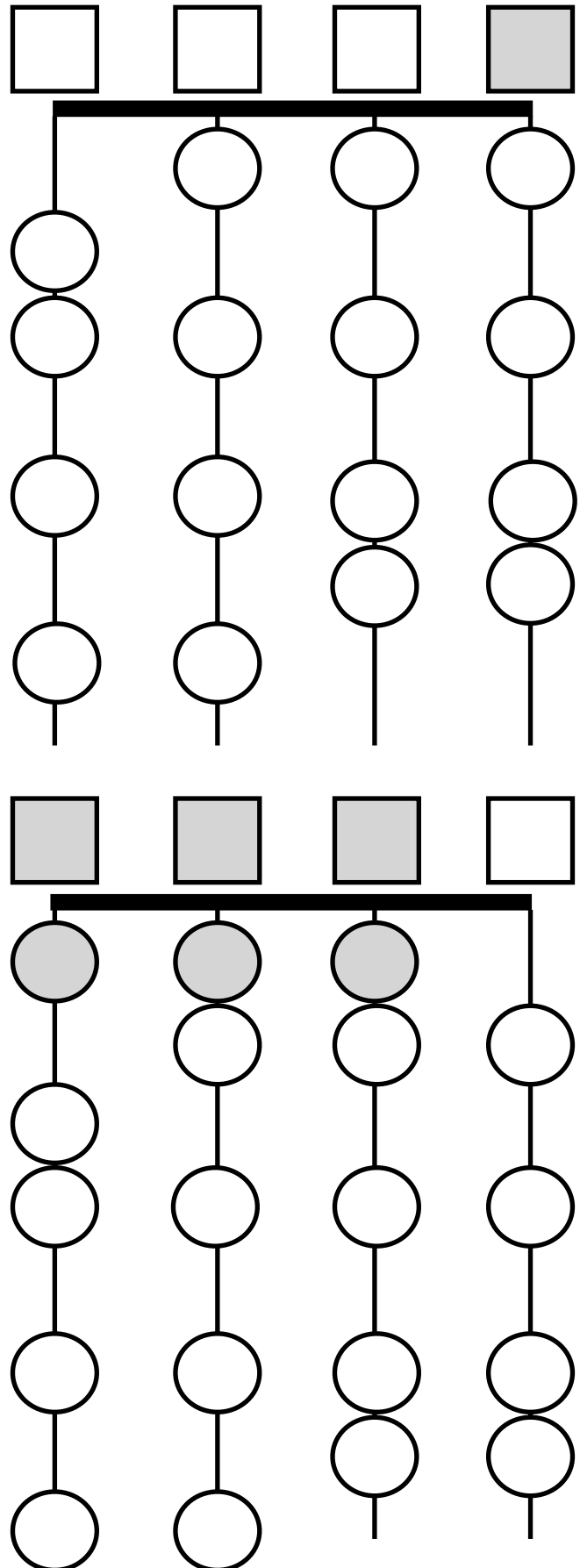
The key of E Major has 4 sharps: F#, C#, G#, and D#.  
(Note: Open C, G and D-strings are not allowed!)

Finger patterns used:

C string: \_\_\_\_\_ G string: \_\_\_\_\_

D string: \_\_\_\_\_ A string: \_\_\_\_\_

Finger patterns are 1-2, 2-3, 3-4, or open



# Fingerboard Geography for Viola

- First Position -

## Key of A-Flat Major



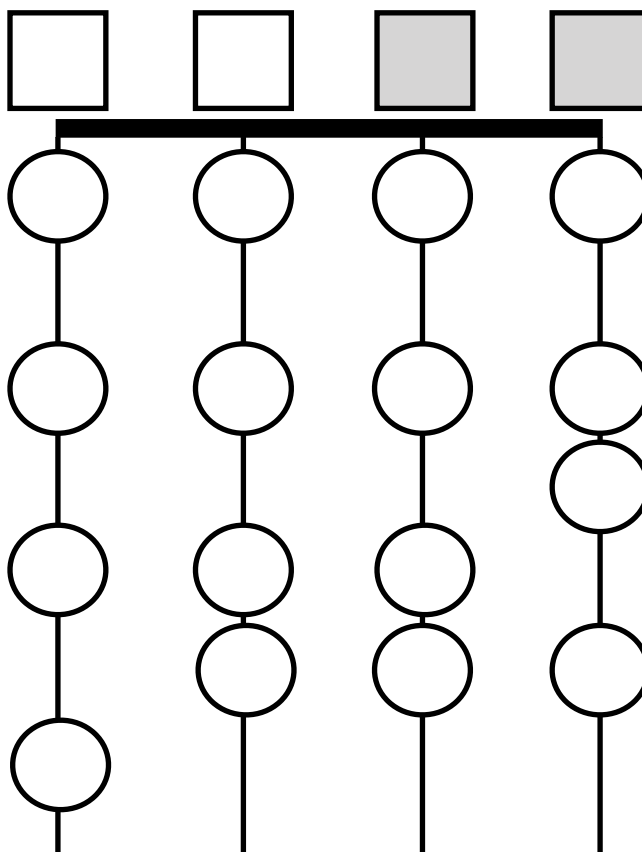
The key of A-flat Major has 4 flats: B-flat, E-flat, A-flat and D-flat. (*Open A, and D strings are not allowed!*)

Finger patterns used:

C string: \_\_\_\_\_ G string: \_\_\_\_\_

D string: \_\_\_\_\_ A string: \_\_\_\_\_

Finger patterns are 1-2, 2-3, 3-4, or open



## Chromatics

Fill in ALL of the notes on your fingerboard, in half-steps.

Remember the natural half-steps: E-F and B-C.

